

Kalmar Lifting Fifth Wheel.



Keeping your business on the move.

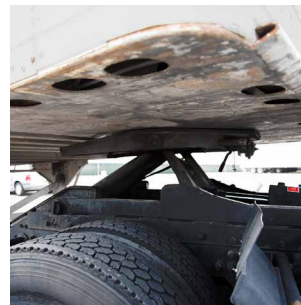
Whether saving you time or improving safety, Kalmar Lifting Fifth Wheels are designed to increase your productivity.

- **The cranking of the landing gear is eliminated** so the Kalmar Lifting Fifth Wheel can do more work in less time and reduce operator fatigue.
- Lifting fifth wheel models permit converted tractors to do double duty by **spotting trailers and hauling over the road.**
- With over **50 years of designing and manufacturing lifting fifth wheels**, Kalmar is dedicated to making your every move count.

Kalmar Lifting Fifth Wheels provide a simple, cost effective way to convert standard over the road trucks into hard working yard tractors with on-road capabilities. Delivering improved safety and better operator comfort, Kalmar makes big jobs seem small.

Learn more at:

www.kalmarusa.com/equipment/lifting-fifth-wheels



Add efficient spotting to your operation.



Give your operators the tools to be more productive.

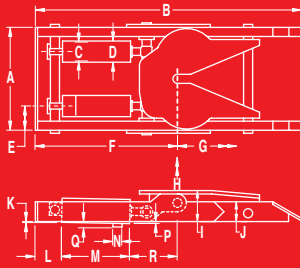


Secure your load for safe over-the-road hauling.

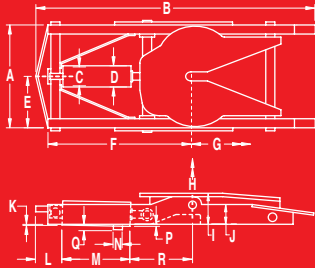


Multiply your capabilities with fewer trucks.

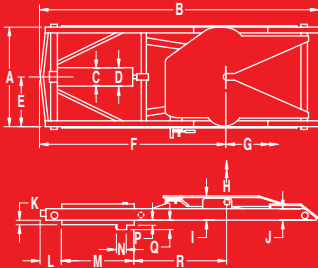
M62, M63, M92 Twin Cylinder



M85, M60, M61 Single Cylinder



M95 Single Cylinder



Selection Guide

- 1 Type of application:** For example – yard spotting, marine dock spotting, JIT transport, off road, or public road use.
 - 2 Gross weight:** The weight of the trailer plus load. As shown in the table, Kalmar Lifting Fifth Wheels are available for handling loads from 60,000 lbs. to 120,000 lbs.
 - 3 Lifting height:** Most applications require a 13' to 14" lift, which will clear obstructions in most spotting areas.
 - 4 Installed down height:** The height from the ground to the top of the 5th wheel plate in down position when installed on a tractor. It determines whether an installed 5th wheel will be low enough to couple with your lowest trailers and your tallest legal height trailers while keeping the load under 13' 6".

The installed down height of your Kalmar Lifting 5th Wheel should match the height of your lowest kingpin.
- Determine installed height by combining the following dimensions:**
- a. Refer to item **i** on the table below. This measurement is the down height of the 5th wheel before installation.
 - b. Determine the frame ride height of your tractor (top of frame to the ground).
- Important:** Installed height plus height of load (top of load to bottom of king pin plate) should not exceed 13' 6".
- 5 C.A.:** The minimum clearance needed to mount the 5th wheel - found by measuring from the center of the single or tandem axles to the rear most above frame obstruction (i.e. transmission mount).
 - 6 Trailer kingpin setting:** The distance from trailer king pin to trailer front (including refrigeration units). This, and tractor C.A., determines whether there is adequate clearance from the back of the cab to the front of the trailer. As with any 5th wheel, adequate space is necessary for clearing trailer corners when turning.

Models and Specifications	M85		M92		M95		M60		M61		M62HD		M63HD	
	U.S.	METRIC	U.S.	METRIC	U.S.	METRIC	U.S.	METRIC	U.S.	METRIC	U.S.	METRIC	U.S.	METRIC
Gross Weight Capacity (Lbs., Kg.)	60,000	27,216	90,000	41,000	60,000	27,216	60,000	27,216	70,000	31,752	100,000	45,360	120,000	54,432
Minimum C.A. Dim. (inches, mm)	72	1829	72	1829	84	2134	72	1829	72	1829	72	1829	72	1829
Lifting Height (inches, mm)	13	330	13	330	18.50	470	14	356	14	356	14	356	14	356
Down Height (inches, mm)	8.50	216	8.5	216	9.5	241	10.25	260	10.25	v	10.25	260	10.25	260
Dimensions (inches, mm)														
A. Width	34	864	34	864	34	864	34	864	34	864	34	864	34	864
B. Length	84.37	2143	86.50	2197	105.5	2680	86.25	2191	86.25	2191	88	2235	88	2235
C. Cyl. Bore Diameter	7	178	7	178	7	178	7	178	8	178	7	178	8	203
D. Cyl. O.D.	7.75	197	7.75	197	7.75	197	7.75	197	8.75	197	7.75	197	8.75	222
E. Cyl. Center to Frame	17	432	9.25	235	17	432	17	432	17	432	8	203	8	203
F. Frame Front to King Pin, Down Pos.	50.25	1175	52	1320	64.25	1632	47	1194	47	1194	52.50	1333	52.50	1333
G. Travel Back, Up Pos.	6	152	6	152	11	280	6.50	165	6.50	165	6.50	165	6.50	165
H. Lifting Height	13	330	13	330	18.50	470	14	356	14	356	14	356	14	356
I. Down Height	8.5	216	8.5	216	9.5	241	10.25	260	10.25	260	10.25	260	10.25	260
J. Frame Height	3.88	99	3.88	99	3.88	99	5.63	143	5.63	143	5.63	143	5.63	143
K. Cyl. Front Below Frame	2.38	61	2.25	57	2.25	57	.38	10	.88	10	.38	10	.88	22
L. Cyl. to Frame Front	8	203	9.25	235	8	203	8	203	8	203	9.38	238	9.38	238
M. Cyl. Barrel Length	22.12	562	22.5	572	25.5	648	22.5	572	22.5	572	22.5	572	22.5	572
N. Cyl. Port Block Length	2.75	70	2.75	70	2.75	70	2.75	70	2.75	70	2.75	70	2.75	70
P. Cyl. Rear Below Frame	2.25	57	2	51	2	51	.75	19	1.25	19	.75	19	1.25	32
Q. Port Block Below Frame	4.5	114	4	102	4.25	108	3.38	86	3.75	86	3.38	86	3.75	95
R. King Pin to Cyl. Barrel	19.5	495	20	508	34.13	867	20	508	20	508	20	508	20	508
Dry Weight (Lbs., Kg.)	1325	601	1400	636	1400	636	1325	601	1325	601	1475	670	1475	670

Road Lock Kit: Standard on most models. Required for public road use.

King Pin Release: Pneumatic with cab control valve.

Fluid Type: Anti-wear hydraulic oil with pour-point rated according to operating temperatures and conditions. (Not included with unit).

Optional models are available for more severe applications.

Pump: Hydraulic gear pump with integral valve. Output at 1500 rpm: 20 gpm, 2000psi maximum pressure. Air shift for the valve comes standard. Hydraulic System fittings and tubing are supplied for installation. System is power-up, gravity down with the cylinder barrel acting as the reservoir.

PTO Ratio Required: Single Cylinder - 80-90% Double Cylinder - 90-110% (Not included with unit).

Air Shift Kit: Consists of air controls for PTO, hydraulic valve and jaw release that are mounted in a console for cab installation. Available at extra cost.



KALMAR

Making your every move count

www.kalmarusa.com